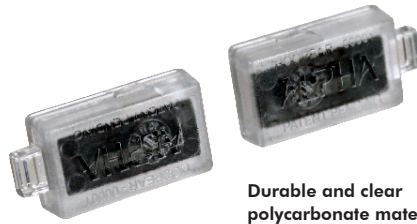


Jewel Lok™

Solutions that attach directly to the merchandise, not the packaging

Hoop Earring Solution

Either polycarbonate piece may be used on left or right earring



Durable and clear polycarbonate material



Not visible from the front of the jewelry card - no impact to merchandising

Jewel Lok™ offers superior security to dramatically reduce shrink. Jewel Lok™ is the only solution on the market that attaches directly to the jewelry - protecting the merchandise not the packaging. Jewel Lok™ is easily removed using an Alpha HandKey™.

All solutions provide these benefits:

- > Fits on existing peg hook or spinner rack display
- > Low profile creates minimal impact to amount of merchandise displayed per rack
- > Lightweight (5 grams) tag does not impact how jewelry hangs on displays
- > Provides benefit denial level of protection - jewelry will break before tag can be compromised

Stud Earring Solution



Strong visual deterrent

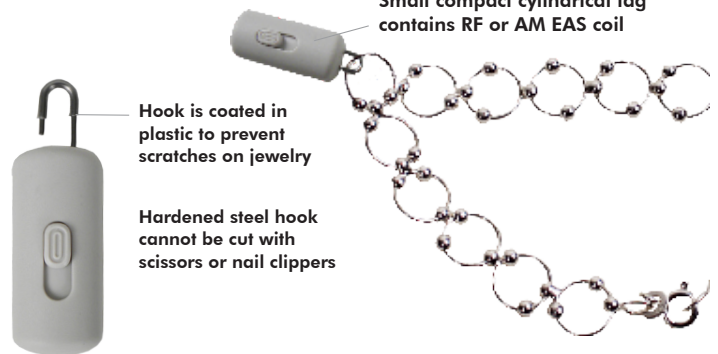
Attaches directly to earring post - pins provide "parking spot" for earring backs

SUGGESTED APPLICATIONS:

Stud earrings, hoop earrings, necklaces, bracelets & other loose jewelry items

Loose Jewelry Solution

Small compact cylindrical tag contains RF or AM EAS coil



Hook is coated in plastic to prevent scratches on jewelry

Hardened steel hook cannot be cut with scissors or nail clippers

Murphy Security Solutions

8753

North

1-708

www.murphysecuritysolutions.com



Not visible from the front of the jewelry card - no impact to merchandising



show. secure. sell.

Alpha's single key solution to control high-theft

ORDER CODE	SAP CODE	DESCRIPTION	EXTERNAL DIM. (L x H x D)	PIN DIM.	WEIGHT	CARTON QTY
JWEAR-STUD01	10009356	Stud Earring Solution	1.75"L x 1.875"H x .375"D (4.45cmL x 2.54cmH x .95cmD)	.24"-.38" (.61mm - .96mm)	6 grams/tag	Master Carton - 2,000 Inner Carton - 500 (6.5 lbs)
JWEAR-HOOP01	10009329	Hoop Earring Solution	1.06"L x .67"H x .54"D (2.71cmL x 1.71cmH x 1.36cmD)	.26" - .32" (.66mm-.80mm)	3 grams/pc	Master Carton - 2,000 Inner Carton - 500 (6.5 lbs)
JWNECK01ND JWNECK01RF	10100336 10100426	Loose Jewelry - AM Loose Jewelry - RF	1.57"L x .63"H x .63"D (4.00 cmL x 1.60 cmH x 1.60 cmD)	N/A	5 grams/tag	Master Carton - 2,000 Inner Carton - 500 (6.5 lbs)

Murphy Security Solutions
8753 W. Cermak Road
North Riverside, IL 60546
1-708-482-4682
www.murphysecuritysolutions.com