

NEW GENERATION

Electronic Article
Surveillance

S20

S20

NEW GENERATION EAS



Driven by design, the revolutionary S20 rewrites convention, bringing to the market for the first time an attractive, customizable, feature rich antenna contained within a sleek 3.5 inch footprint. Powered by Checkpoint's well proven and respected EVOLVE electronics, the new configuration delivers full system connectivity for remote servicing and consolidated management reporting.

Reinventing traditional antenna, Ideal for Apparel stores or other retailers wishing to maximize trading space and to keep store entrances clear and welcoming. The S20's sleek, minimalistic body with numerous trim and LED accent color combinations, along with custom wrap options, enhance the retail environment, complimenting branding and store design.

Reducing visual impact, maintaining functionality, without taking up valuable space. The S20 can be free standing, wall or door mounted and works directly against metal.

For high-performance EAS technology that focusses on design and minimal space impact, the S20 uniquely offers retailers an aesthetically pleasing design without compromise.

AESTHETICALLY DESIGNED SMALL FOOTPRINT

EASE OF INTEGRATION INTO STORE DESIGN

MULTI-COLORED LEDs

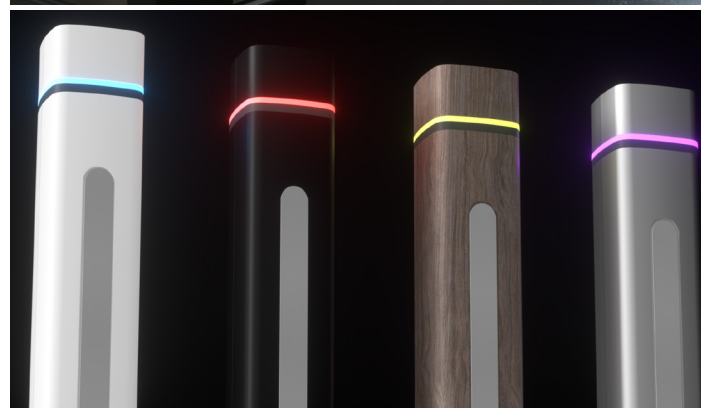
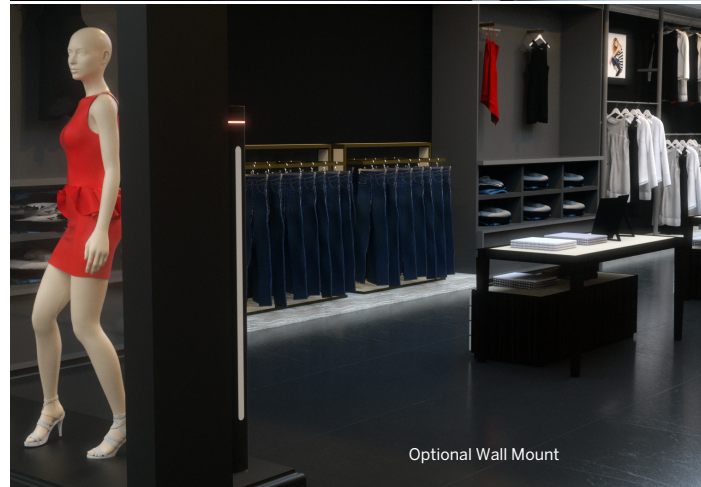
AMBIENT & ACCENT LIGHTING

FLOOR OR WALL MOUNT

CUSTOMIZABLE

REMOTE CONNECTIVITY

seamless management reporting



Multiple Custom Wrap Options



Multiple Trim Color Options

	Part Number	Description
RF 8.2 MHz	10057059	Pedestal EVOLVE S20, white
Aisle width 1.8m / 6ft	10063783	Pedestal EVOLVE S20, black
Height: 1.4 m/ 5 ft	10093784	S20 wall mount bracket, white
Width/Depth: 87.5 mm / 3.5 in	10035643	S20 wall mount bracket, black

Murphy Security Solutions
8753 W. Cermak Road
North Riverside, IL 60646
Office: 1-708-482-4682
www.murphysecuritysolutions.com