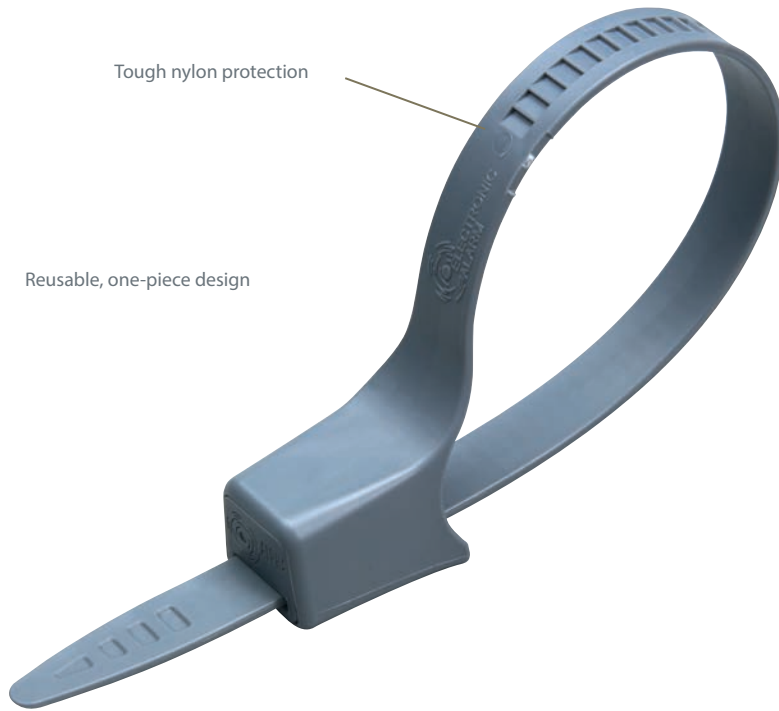


# Cinch Wrap



Tough nylon protection

Reusable, one-piece design

Available in two sizes:  
7" and 9"

Easy application and removal



Hard-to-protect products demand the flexible security of Checkpoint's S3 Cinch Wraps. Cinching snugly to large or unwieldy merchandise, Cinch Wraps offer a visible deterrent to thieves. They are easy and intuitive to apply and remove.

#### KEY FEATURES:

- Reusable, one-piece design
- Available in two sizes: 7" and 9"
- Easy to apply and remove
- 1 Alarm activates EAS gates

#### SUGGESTED APPLICATIONS:

Sporting equipment  
Anything with a handle



ORDER CODE	SAP CODE	DESCRIPTION	EXTERNAL DIM. (H x W x L)	CARTON QTY.	CARTON WEIGHT
SNWRAP2ND SNWRAP2RFR	9175079 9169250	Cinch Wrap 7" - AM Cinch Wrap 7" - RF	1.36"H x 0.99"W x 8.75"L (3.50 cmH x 2.50 cmW x 27.30 cmL)	200	7lbs. (4 kg)
SNWRAP3ND SNWRAP3RFR	9183057 9169251	Cinch Wrap 9" - AM Cinch Wrap 9" - RF	1.36"H x 0.99"W x 12.75"L (3.50 cmH x 2.50 cmW x 32.40 cmL)	200	7lbs. (4 kg)

**Murphy Security Solutions**  
8753 W. Cermak Road  
North Riverside, IL 60546  
1-708-482-4682  
[www.murphysecuritysolutions.com](http://www.murphysecuritysolutions.com)

**Checkpoint**  
Alpha® High-Theft  
Solutions