

RF Deactivation



Integrated scan/deactivation capabilities

Streamlined throughput

Reduced false alarms

Deactivation range up to 15 inches

RF deactivation integrated into most popular scanner models



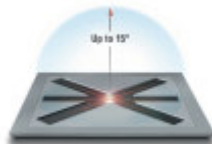
Deactivation of security labels – an important part of any successful EAS program – achieves its full potential with radio frequency technology. No other EAS deactivation technology comes close in a feature-for-feature comparison. For retailers focused on customer service, Checkpoint's patented RF-EAS deactivation technology streamlines throughput so that checkout proceeds rapidly and deactivation takes place discreetly.

With deactivation heights unmatched in the industry, RF deactivation ensures that RF labels – no matter what the orientation or if embedded in source-tagged merchandise – are deactivated. For retailers, this means the virtual elimination of the number one cause of false alarms: failures to deactivate, common with other EAS technologies. For a retailer's customers, this means no embarrassing moments as they leave the store with legitimately purchased merchandise.

Checkpoint continues to enhance and refine RF deactivation technology. The only EAS technology to offer truly integrated scan/deactivation, RF deactivation blends into existing operations without the need to invest in costly checkstand renovations or the burden of on-going training. Scanners are available today, direct from the manufacturer, with built-in RF deactivation capability.



Streamlining point-of-sale transactions, RF deactivation blends seamlessly with standard POS procedures to deliver reliable deactivation of every RF label passing through the RF field.



Streamlining Deactivation heights up to 15 inches above the scanner ensure deactivation no matter the orientation or location of the RF label.

Checkpoint has also expanded the role of RF-EAS deactivation to address other areas of shrinkage. Interlock, which allows deactivation after a valid scan, addresses cashier sliding; post-scanner verification, which locates non-deactivated labels after the scanning verification process, can alert the cashier that a label is not deactivated. Postscanner verification can also be used to alert the store manager that an internal theft attempt might be occurring, or activate a CCTV system to record the event.

Whether using RF deactivation's standard capabilities or custom features such as interlock or post-scan verification, retailers and their customers benefit from RF deactivation's reliable and discreet performance.

RF Deactivation



Checkpoint Scanner Compatibility Guide

Symbol Technologies, Inc.®

LS4000 Gun
LS5700, LS5800
LS6000
LS9100
M2000

PSC® (Formally Spectra Physics)

Freedom (Horizontal)
Freedom (Vertical)
750F
750SL (Horizontal)
750SL (Vertical)
760SLS
950LX (Plastic Top)
960LS (Plastic Top)
960LS (Metal/Sapphire Top)
Megellan, Magellan SL, 8500
PSC Factory Installed
CP Kit
Duet
VS1000, VS1200
PSC Factory Installed
CP Field Installed
HS1250
PSC Factory Installed
CP Kit
QS6000
SP400
PSC Factory Installed
CP Upgrade Kit

NCR®

NCR 7872
NCR 7875
NCR 7882
NCR 7892

Metrologic®

MS 6720
MS 7220
MS 9520
MS 7120
MS 7320
MS 7600

ICL/FUJITSU®

Datachecker
Orion
ICL 7440
ICL Series 9000
ICL Orion 9500
Fujitsu 2002 with scale
Fujitsu 9900 with and w/o scale

POS Data®

POS Data Weigh Scale

ScanTech®

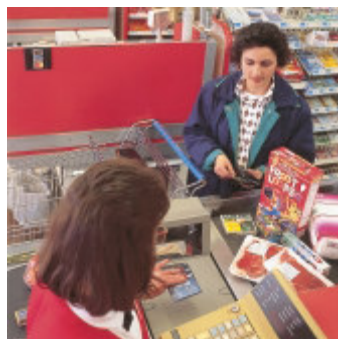
P-4010/CP, G-5040, G-6010, H-3010, C-5010, P-7010
--

*Integrated with other scanner companies worldwide.

Integrated scan/deactivation from Checkpoint Systems, Inc., revolutionized the security aspects of retail point-of-sale transactions. As one of the many revolutionary and evolutionary developments of RF-EAS technology developed by Checkpoint, RF deactivation streamlines the retailer's POS operation. Deactivation heights up to 15 inches above the deactivation unit increase store personnel's confidence in the system's performance.

Checkpoint's RF deactivation electronics are integrated into the most popular bar code scanners, from manufacturers such as IBM, NCR, ICL/Fujitsu, PSC/Spectra-Physics, Symbol Technologies, Scantech, Metrologic, and POS Data. Today, many popular scanners can be purchased with built-in Checkpoint RF deactivation capabilities.

The Counterpoint® pad deactivates RF labels at a range of up to 15 inches above the pad. In addition, deactivation at speeds of more than 100 products per minute is possible with integrated scan/deactivation. And, Checkpoint's RF deactivation solutions work with Checkpoint's complete range of EAS sensors. Retailers using RF deactivation are using the power of RF technology to streamline POS operations, speed customer throughput and enhance customer service.



Fast, effective and reliable, RF deactivation eliminates failures to deactivate, the leading cause of false alarms with competitive technologies. And RF technology is safe for use with audio tapes, video tapes, and credit cards.

Murphy Security Solutions

The Right Choice for Retail Security

1217 Robinhood Lane
LaGrange Park, IL 60526

Toll Free 1.877.482.4682